
2.3.1 single rear horn loaded (scoop) bass enclosure

2.3.2

2.3.3

Application -

This design is favoured for its punch, good efficiency, and low frequency extension. An H.F. unit can be added to the 12" and 15" versions to provide a full range cabinet. The 15" and particularly the 18" version are favourites with reggae bass guitarists. These are also suitable as the bass elements of a multi-way system.

Effective Volume -

12" enclosure - 217 litres (7.6 cubic feet).
15" enclosure - 407 litres (14.4 cubic feet).
18" enclosure - 685 litres (24.2 cubic feet).

Loudspeakers -

12" enclosure -

EM 12/100CT full range cone driver

EM 12/100 cone bass driver

EM 12/150 cone bass driver

EM 12/200 cone bass driver

optional - HD 1002 or HD1000 tweeters and
LDX25 crossover

15" enclosure -

EM 15/100 cone bass driver

EM 15/200 cone bass driver

EP 15/200 cone bass driver

EP 15/300 cone bass driver

EP 15/500 cone bass driver

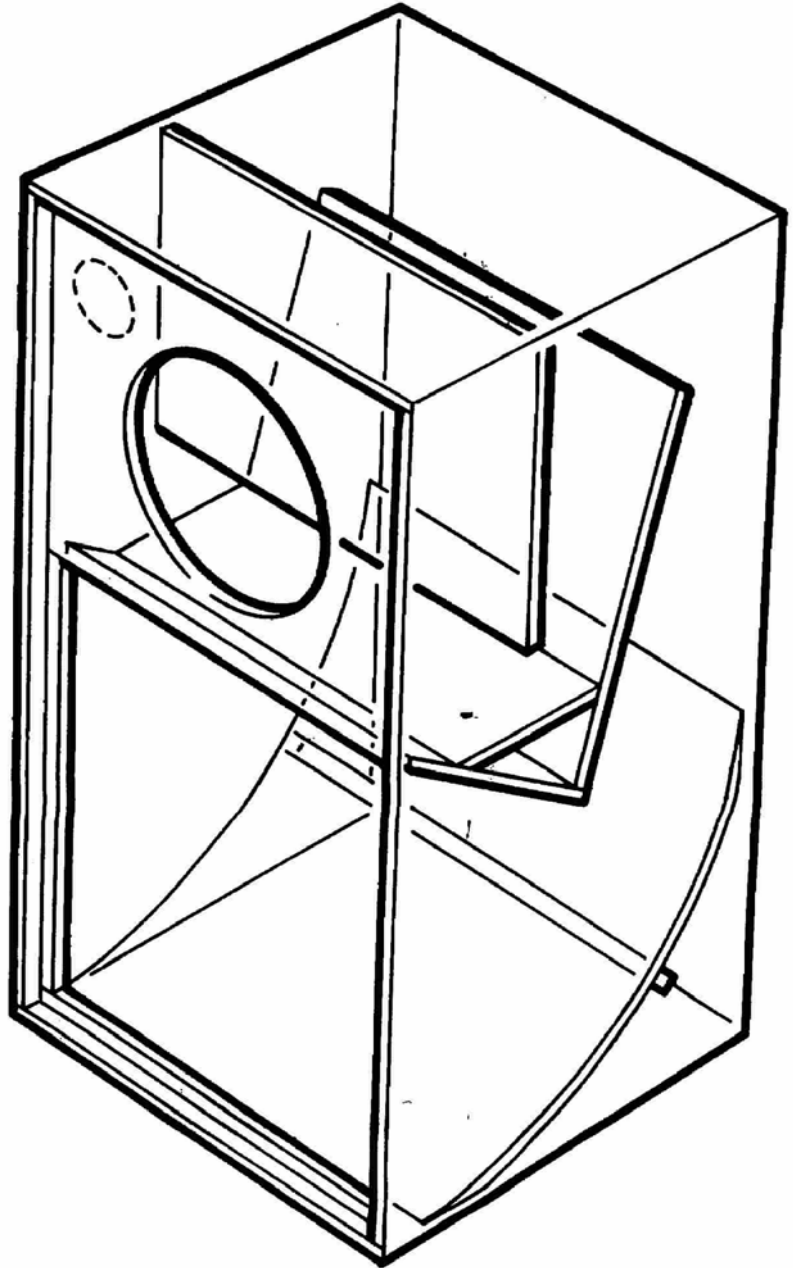
optional - CD 1009 tweeter and LDX25
crossover

18" enclosure -

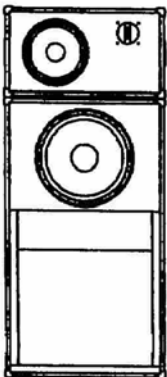
EP 18/300 cone bass driver

EP 18/500 cone bass driver

single rear horn loaded (scoop) bass enclosure

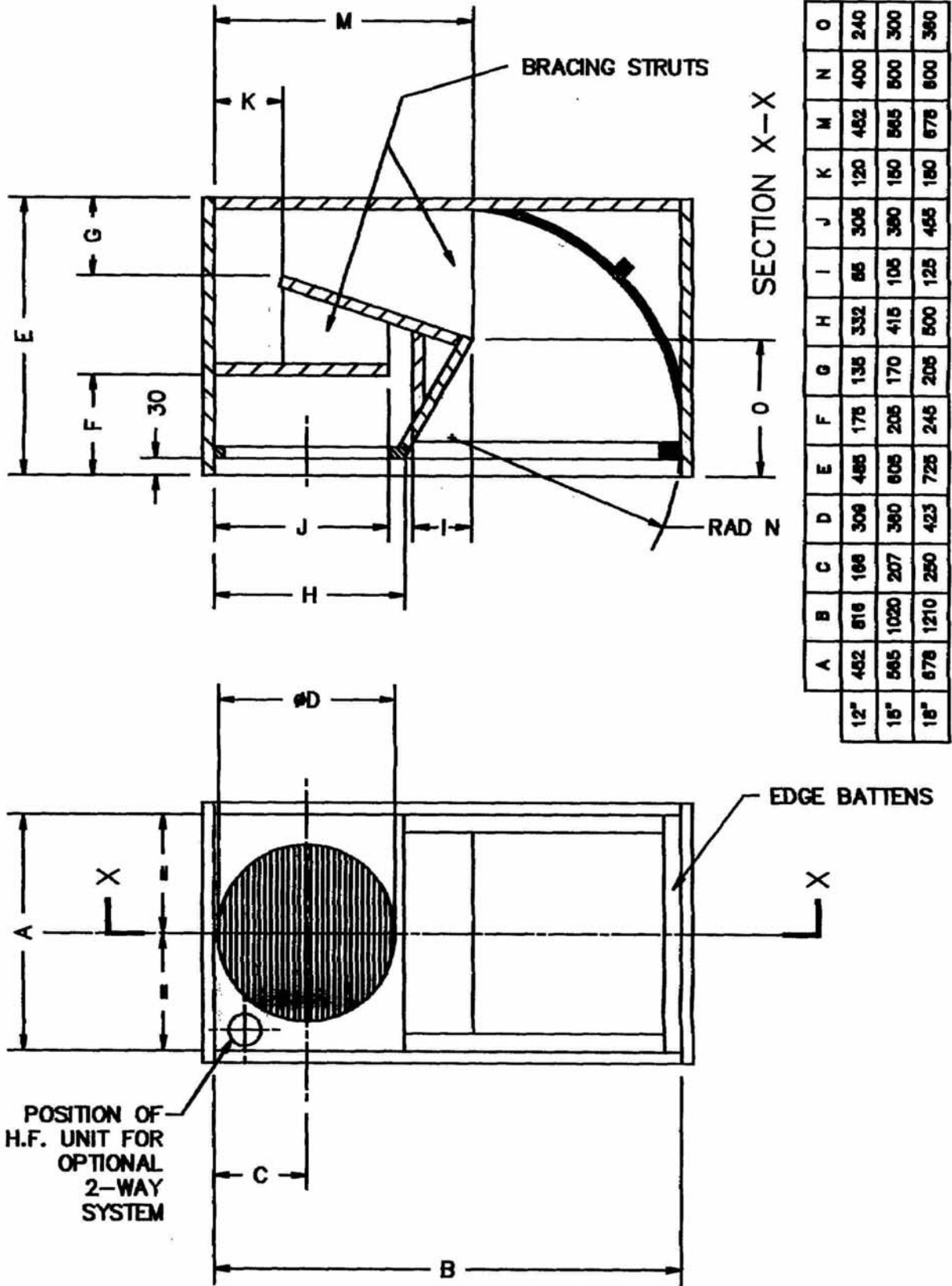


**suggested
use in a
multiway
system**



3-d Illustration

single rear horn loaded (scoop) bass enclosure



mechanical construction

Sheet Material Requirements:

12" enclosure - 1,21m x 2,95m (4.0' x 9.7')

15" enclosure - 1,21m x 3,65m (4.0' x 12.0')

18" enclosure - 1,21m x 5,6m (4.0' x 18.5')

Concise page
from new edition

**single rear horn loaded (scoop)
bass enclosure**

Application

This design is favoured for its punch, good efficiency, and low frequency extension. An H.F. unit can be added to the 12" and 15" versions to provide a full range cabinet. The 15" and particularly the 18" version are favourites with reggae bass guitarists. These are also suitable as the bass elements of a multi-way system.

Effective Volume

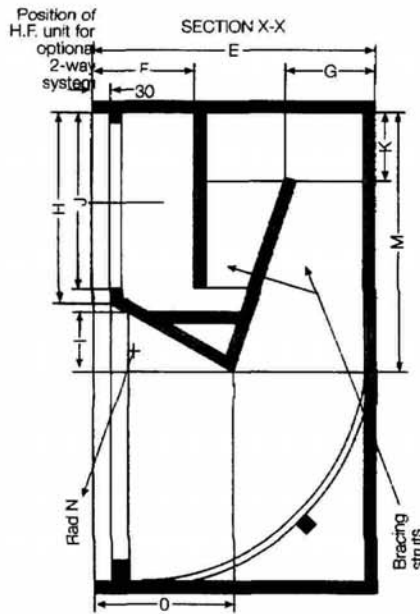
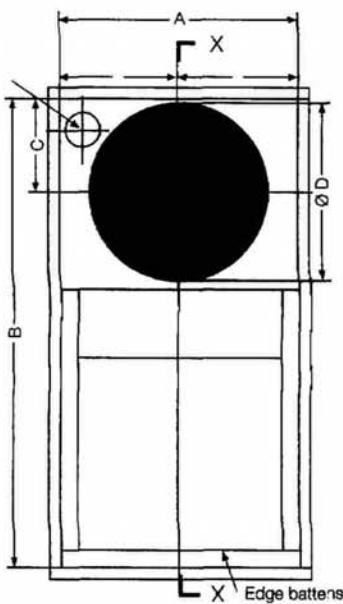
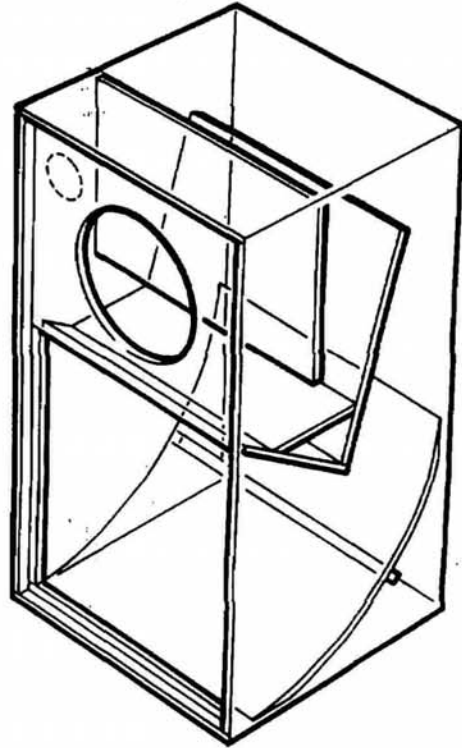
- 12" enclosure - 217 litres (7.6 cubic feet)
- 15" enclosure - 407 litres (14.4 cubic feet)
- 18" enclosure - 685 litres (24.2 cubic feet)

Loudspeakers

- 12" enclosure:
- ME 12/100LT full range cone driver
 - ME 12/100LE cone bass driver
 - ME 12/300 cone bass driver
 - PS 12/200 cone bass driver
 - PS 12/300
- optional: APT80 tweeters and pxi15k0 crossover

- 15" enclosure:
- ME 15/100 cone bass driver
 - ME 15/200 cone bass driver
 - ME 15/200 cone bass driver
 - ME 15/300LF cone bass driver
 - PS 15/300 cone bass driver
 - PS 15/500 cone bass driver
- optional: APT80 tweeter and pxi15k0 crossover

- 18" enclosure:
- PS 18/400 cone bass driver
 - PS 18/600 cone bass driver

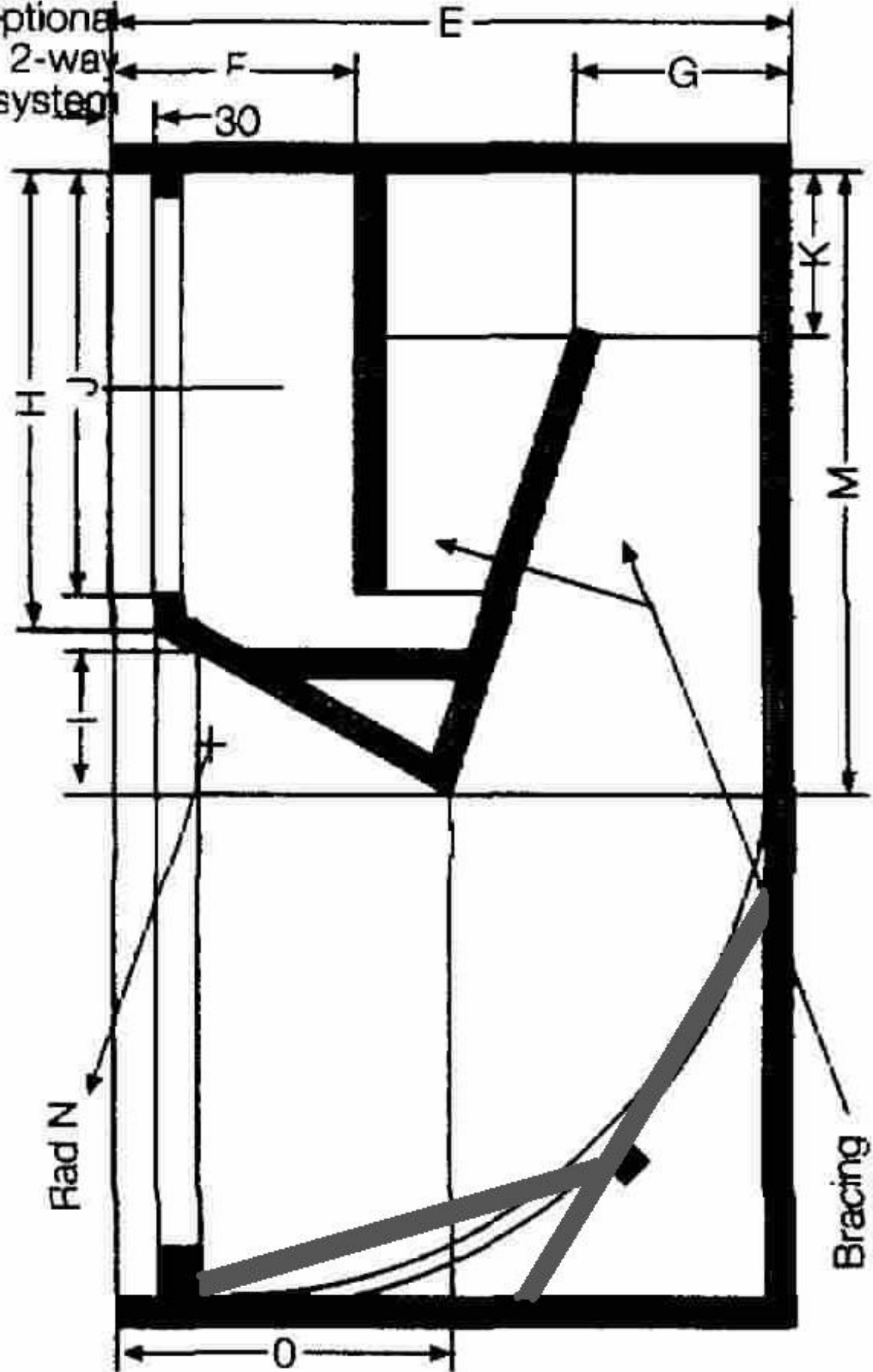


Sheet Material Requirements:
 12" enclosure - 1,21 x 2,95 m (4.0' x 9.7')
 15" enclosure - 1,21 x 3,65 m (4.0' x 12.0')
 18" enclosure - 1,21 x 5,60 m (4.0' x 18.5')

	A	B	C	D	E	F	G	H	I	J	K	M	N	O
12"	452	816	166	285	485	175	135	332	85	305	120	452	400	240
15"	565	1020	207	360	605	205	170	415	105	380	150	565	500	300
18"	678	1210	250	423	725	245	205	500	125	455	180	678	600	360

Position of
H.F. unit for
optional
2-way
system

SECTION X-X



Bracing
struts